

RESOURCE MANAGEMENT SERVICES

440 Harcourt Avenue
Seaside, CA 93955

Telephone (831) 899-6737
FAX (831) 899-6211
TDD (831) 899-6207

PATIO COVER PLAN

FOR THE NEW PATIO COVER YOU WANT TO CONSTRUCT, YOU WILL NEED TO PROVIDE A PLOT PLAN WITH YOUR CONSTRUCTION PLANS. HERE IS AN EXAMPLE OF WHAT YOUR PLOT PLAN NEEDS TO SHOW:

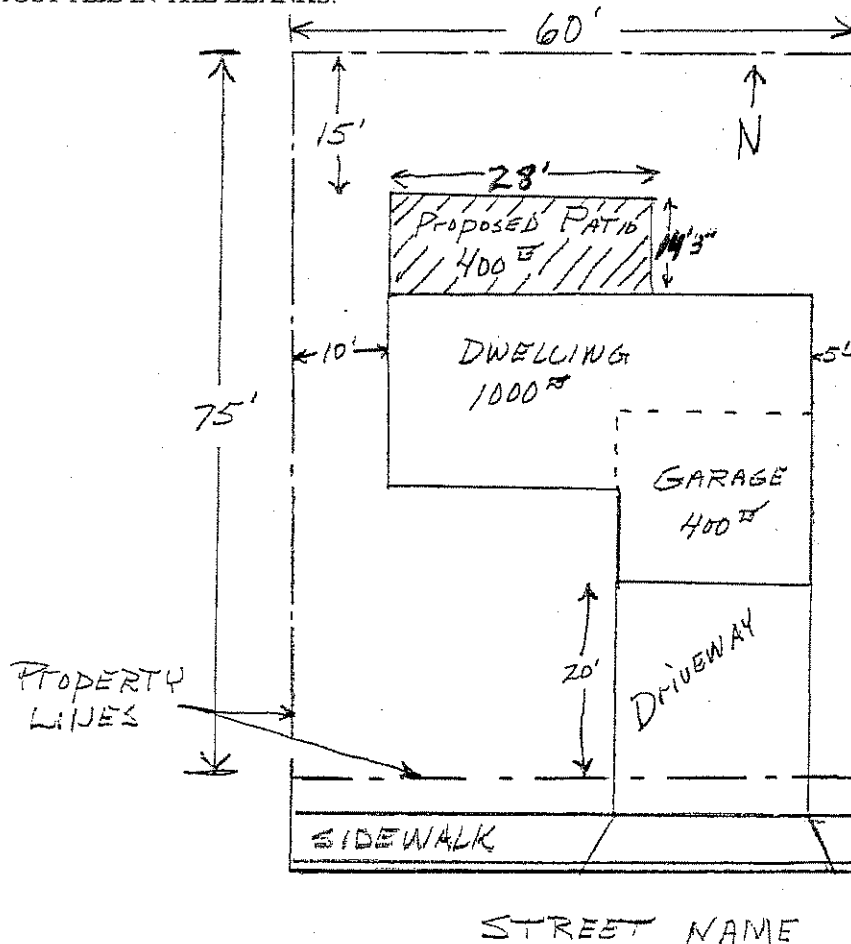
YOU HAVE TO SHOW THE EXISTING HOUSE AND GARAGE, PLUS ALL OTHER EXISTING STRUCTURES ON THE PROPERTY. ALSO, SHOW THE LOCATION OF THE PROPOSED CONSTRUCTION. PROVIDE DIMENSIONS OF ALL STRUCTURES AND CALCULATE THE SQUARE FOOTAGE FOR EACH STRUCTURE.

PROVIDE ALL DIMENSIONS AND SQUARE FOOTAGE OF THE LOT.

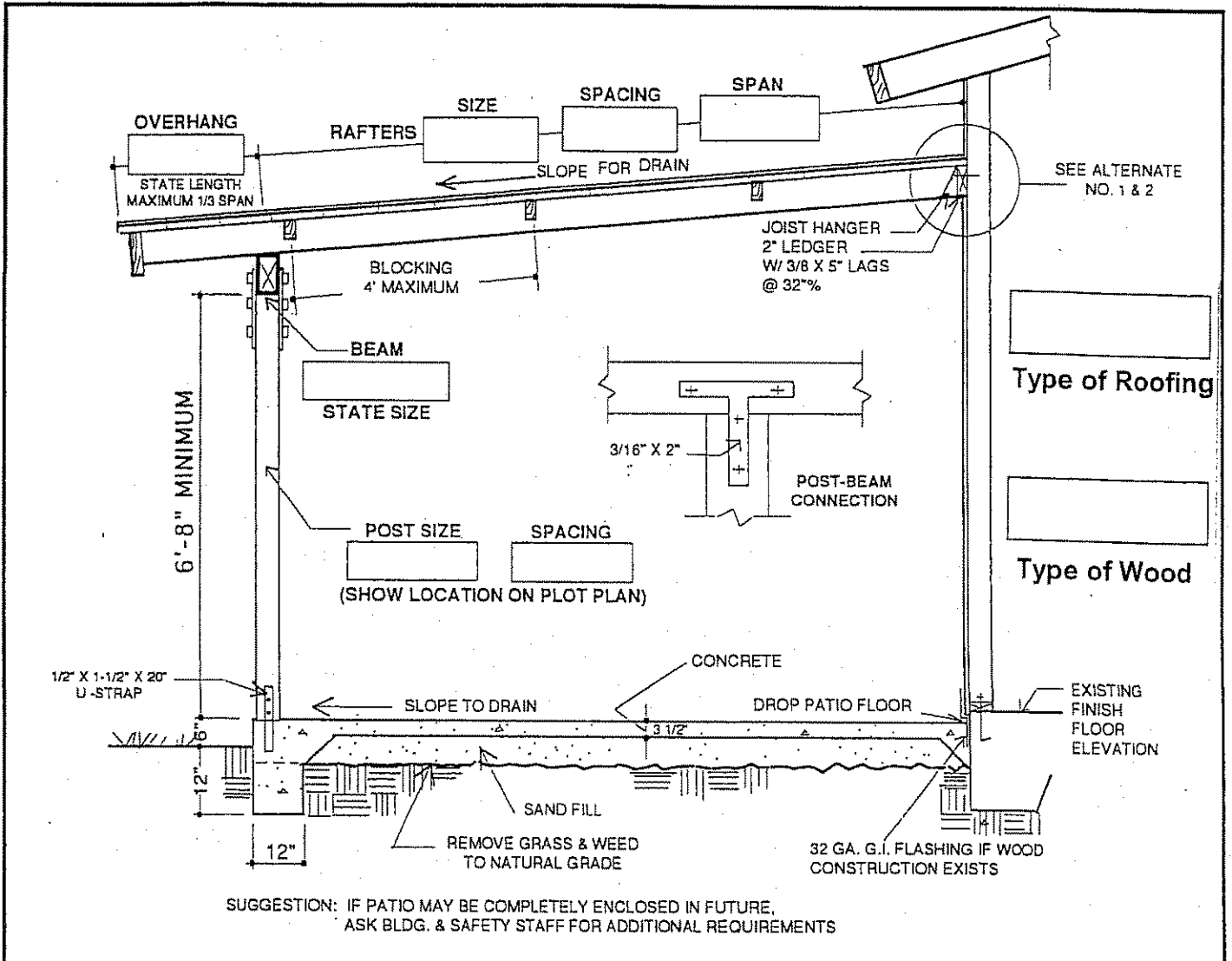
SHOW ALL SETBACK DIMENSIONS FROM THE PROPERTY LINES TO ALL EXISTING AND PROPOSED STRUCTURES.

SIDEYARD SETBACKS ARE 5' MINIMUM. REARYARD SETBACKS ARE 10' MINIMUM. CHECK WITH THE PLANNING AND ZONING DEPARTMENT FOR FRONTYARD SETBACKS, AS THEY DIFFER THROUGHOUT THE CITY DUE TO THEIR ZONING CLASSIFICATION.

THE ATTACHED PATIO PLAN MAY BE USED AS CONSTRUCTION PLANS FOR YOUR PATIO, JUST FILL IN THE BLANKS.

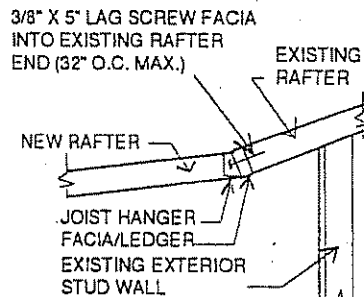
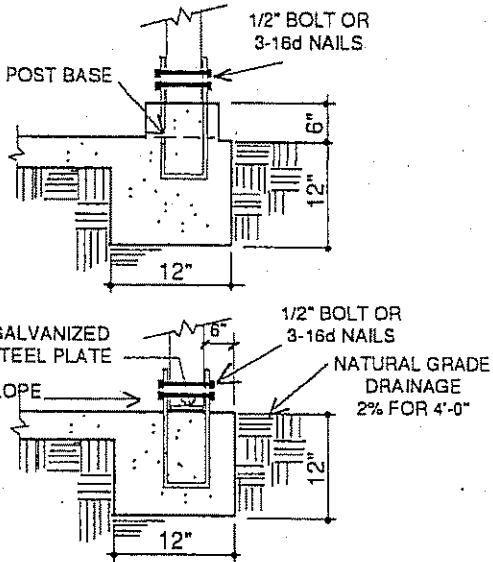


Roof Slope

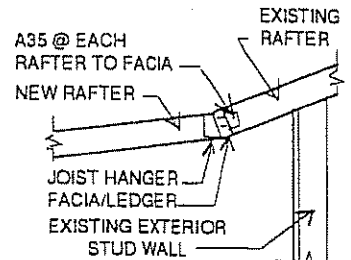


Type of Roofing

Type of Wood



ALTERNATE NO. 1



ALTERNATE NO. 2

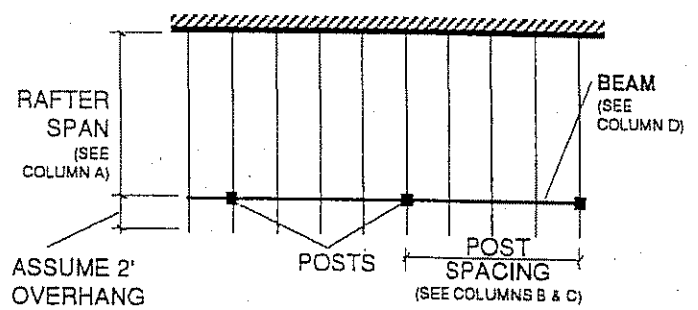
ALLOWABLE OPEN PATIO RAFTER SPANS (FEET AND INCHES)

10 PSF LIVE LOAD +7 PSF DEAD LOAD PLUS WEIGHT OF RAFTERS

SIZE / GRADE	SPACING				
	12"	16"	24"	32"	48"
2X4 SS	18-3	16-0	13-3	10-9	7-0
	17-0	13-9	12-3	9-9	6-3
	15-6	13-3	11-0	8-9	5-9
	13-0	11-3	9-6	7-6	5-0
Const	11-3	10-0	8-3	6-6	4-3
2X6 SS	27-3	23-0	18-9	15-9	10-0
	24-6	21-6	17-6	14-0	9-3
	22-0	19-3	16-0 ^h	13-0	8-6
	17-0	16-0	12-3	9-9	6-3
2X8 SS	34-3	30-3	24-0	20-9	12-6
	30-9	27-9	23-0	18-9	12-0
	29-0	25-0	20-9	17-3	11-0
	22-0	19-6	16-0	13-3	8-6
2X10 SS		38-3	30-6	26-6	16-6
		35-3	29-0	24-0	15-3
		32-0	26-9	22-0	14-0
		24-6	21-0	16-9	11-0
2X12 SS			38-6	32-0	20-3
			35-3	29-0	18-6
			32-6	26-6	17-0

SIZE / GRADE	SPACING				
	32"	42"	48"	60"	72"
4X4 SS	16-0	14-0	13-6	12-0	10-9
	14-9	13-3	12-3	11-0	10-0
	13-3	12-0	11-0	10-0	9-0
	9-9	8-9	8-3	7-3	6-6
4X6 SS	23-3	20-6	19-3	17-6	16-0
	21-0	18-9	17-3	15-9	14-6
	19-3	16-9	15-9	14-6	13-3
4X8 SS			25-3	22-9	20-9
			23-0	20-9	19-0
			20-9	19-0	17-0
4X10 SS				28-6	26-3
				25-9	23-9
				23-6	21-6

SIZE / GRADE	SPACING			
	48"	60"	72"	96"
6X6 SS	21-6	19-9	18-0	15-6
	19-3	17-9	16-0	14-0
6X8 SS	29-0	26-3	24-0	21-6
	26-0	23-6	21-6	19-3
6X10 SS			31-9	27-6
			29-3	25-3



A RAFTER SPAN (FT.)	B MAXIMUM POST SPACING (FT.) D. Fir #1	C MAXIMUM POST SPACING (FT.) D. Fir #2	D BEAM
8	14-3	13-0	4X6
12	12-9	11-6	
14	11-3	10-3	
16	10-3	9-6	
12	16-9	15-0	4X8
16	15-0	13-0	
20	13-6	12-6	
24	12-6	11-6	
16	19-0	17-3	4X10
20	17-6	15-9	
24	16-0	14-9	
28	15-0	13-9	

GENERAL NOTES

- Douglas fir-larch surfaced dry or green (19% moisture).
- PS 20-70 Repetitive member stresses (15%) and durations (25%).
- Dimensions are horizontal projects.
- No deflection criteria applied. If it is desirable to limit deflection, it is recommended to reduce rafter spans by spacing, 20% for 24" spacing and 10% for 32" spacing.